

**Cooker Hood**

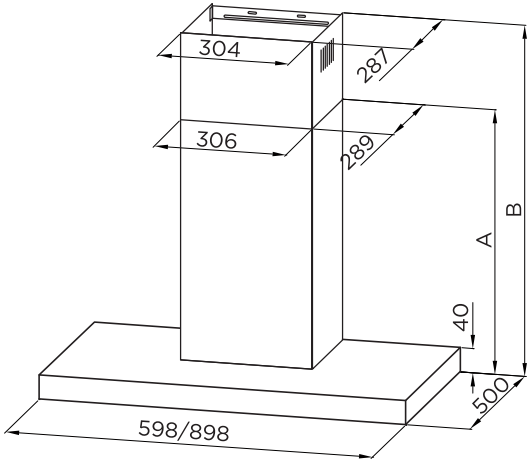
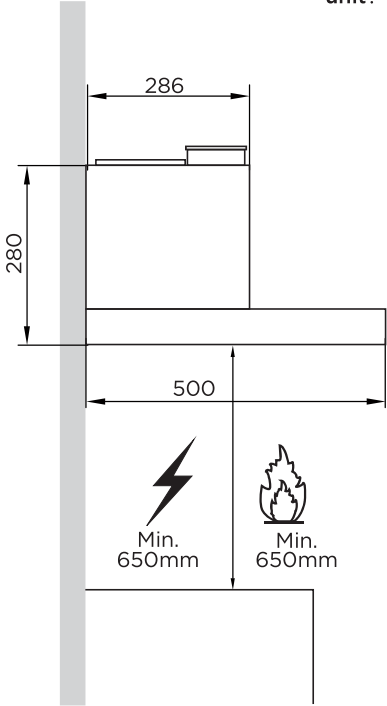
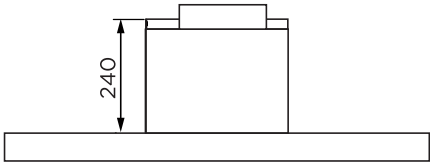
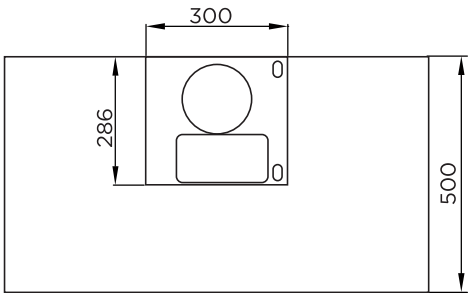
## **USER MANUAL**

**MH60B3250X-ES**  
**MH90B3250X-ES**  
**MH60B4300B-ES**  
**MH90B4300B-ES**

Warning notices: Before using this product, please read this manual carefully and keep it for future reference. The design and specifications are subject to change without prior notice for product improvement. Consult with your dealer or manufacturer for details. The diagram above is just for reference. Please take the appearance of the actual product as the standard.

Dimensions

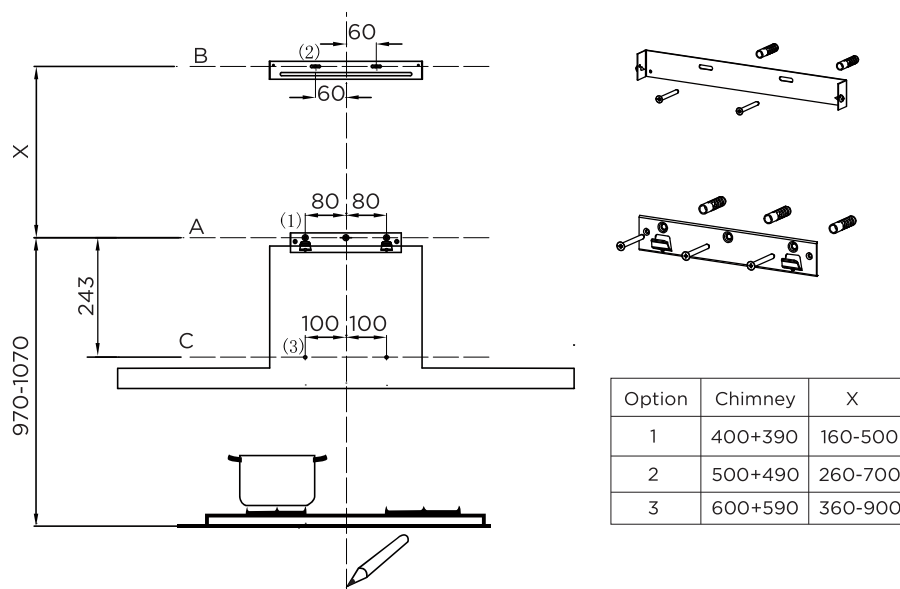
unit: mm



| Option | Chimney | A   | B        | Height   |
|--------|---------|-----|----------|----------|
| 1      | 400+390 | 430 | 465-800  | 430-800  |
| 2      | 500+490 | 530 | 565-1000 | 530-1000 |
| 3      | 600+590 | 630 | 665-1200 | 630-1200 |

# PRODUCT INSTALLATION

## Wall Drilling And Bracket Fixing



### As a first step, proceed with the following drawings:

- I line up to the ceiling or up to the upper limit, at the center of the area in which the hood is to be fitted.
- A horizontal line A at 970 - 1070 mm above the cooker top.
- A horizontal line B at a X mm above the horizontal line A.
- A horizontal line C at a 243 mm below the horizontal line A .

### Mark Points:

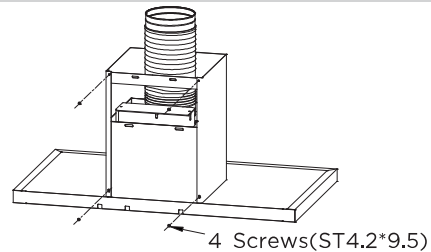
- Mark a point (1) on the horizontal line A, 80 mm to the vertical reference line.
- Repeat this operation on the other side and on the vertical reference line, checking that the three marks are leveled.
- Mark a point (2) on the horizontal line B, 60 mm to the vertical reference line.
- Repeat this operation on the other side, checking that the two marks are on the same horizontal line.
- Mark a point (3) on the horizontal line C, 100 mm to the vertical reference line .
- Repeat this operation on the other side , checking that the two marks are leveled.

### Fix the brackets :

- Drill holes at the marked points with a  $\Phi 10$  mm drill bit.
- Insert the Wall Plugs 11 into the holes.
- Fix the hood fixing bracket 20 with 3 screws 10 (5 x 50) at the horizontal line A.
- Fix a Chimney fixing bracket 21 with 2 screws 10 (5 x 50) at the horizontal line B.

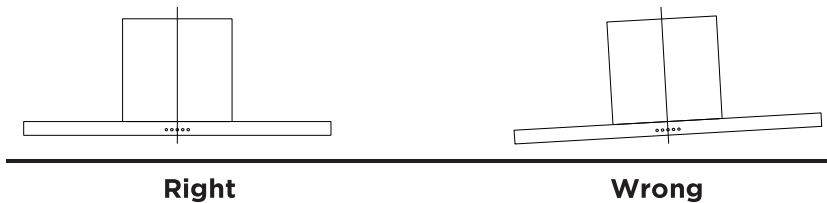
### Lower Decorative Chimney

- Fix the exhaust pipe on the hood body, connect chimney and hood body with 2 screws 12.
- connect chimney fixing bracket and chimney with 2 screws 12.



### Hook The Hood Body

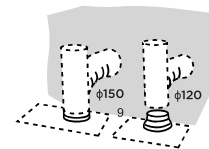
- Hook the hood body to the bracket 20.
- Level the hood body itself.
- Remove the filter from the inside of the hood body, fix the screws 10 to Wall Plugs 11 at the points (3).



### Connections

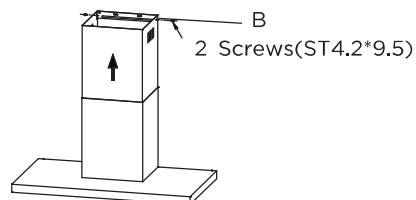
When installing the ducted version, connect the hood to the chimney using either a flexible or rigid pipe  $\phi 150$  or  $\phi 120$  mm, the choice of which is left to the installer.

- If to install a  $\phi 120$  mm air exhaust connection, insert the reducer flange 3 on the hood body outlet.
- Fix the pipe 4 in position using sufficient pipe clamps (not supplied).
- Remove possible charcoal filters.



### Upper Decorative Chimney

- Insert the upper decorative chimney 2.2 into the lower decorative chimney 2.1 and drag it up to the horizontal line B.
- Connect upper decorative chimney 2.2 and chimney fixing bracket 21 with 2 screws 12.





[www.midea.com](http://www.midea.com)